



Carhartt® Tall Washed Duck Active Jac. CTT104050



An update to a Carhartt icon-the J130-this dependable, durable jacket was created with input from the hardworking people who wear our gear day in and day out.

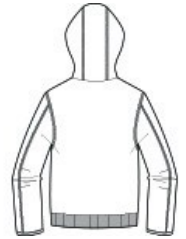
- 12-ounce, firm hand, 100% ring spun cotton duck canvas
- Nylon lining quilted to 80 gram 3M- Thinsulate- insulation in body, sleeves and hood
- Attached quilted three-piece hood with drawcord closure
- Full-length brass front zipper
- Two interior pockets: one zippered, one hook and loop
- Two large hand pockets
- Pen stall in right pocket
- Locker loop
- Elbow pleats for ease of movement
- Rib knit cuffs and waistband
- Carhartt-strong, triple-stitched main seams
- Carhartt label sewn on left pocket

CARE INSTRUCTIONS

Machine wash warm like colors, Do not bleach, Tumble dry medium, Steam iron shell only, Do not dry clean

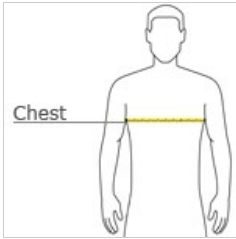


front



back

HOW TO MEASURE



CHEST WIDTH

Measure under the arm and around the fullest part of the chest with arms down, keeping tape horizontal.

SIZE CHART

	LT	XLT	2XLT	3XLT	4XLT
Chest	41-43	44-46	47-49	50-53	54-57

COLOR INFORMATION



Black
PMS NTR BLACK
C



Carhartt Brown
PMS 463C



Navy
PMS 533C